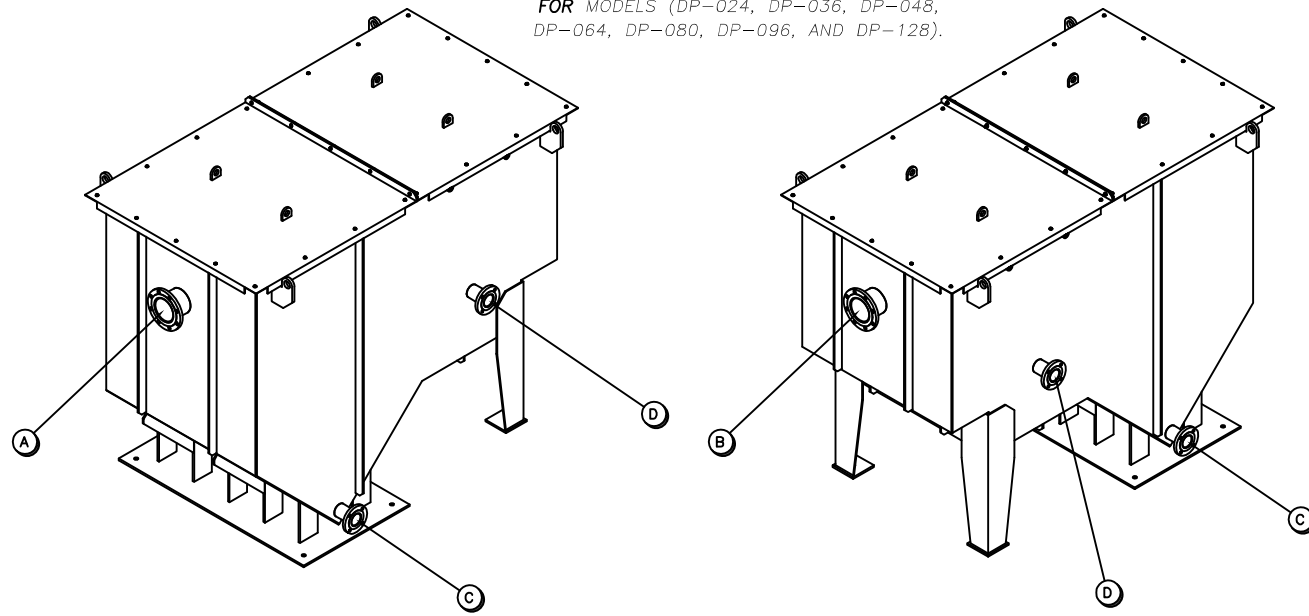


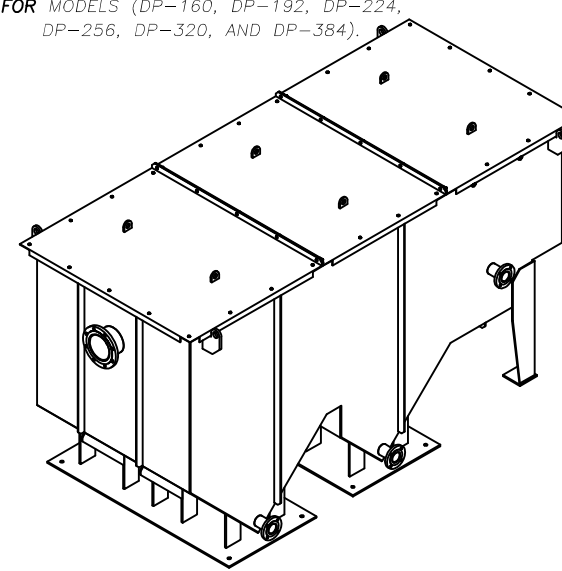
**STYLE 1**

OIL/WATER SEPARATOR WITH (1) SLUDGE HOPPER  
TYPICALLY USED WITH NON-AUGER APPLICATIONS  
FOR MODELS (DP-024, DP-036, DP-048,  
DP-064, DP-080, DP-096, AND DP-128).



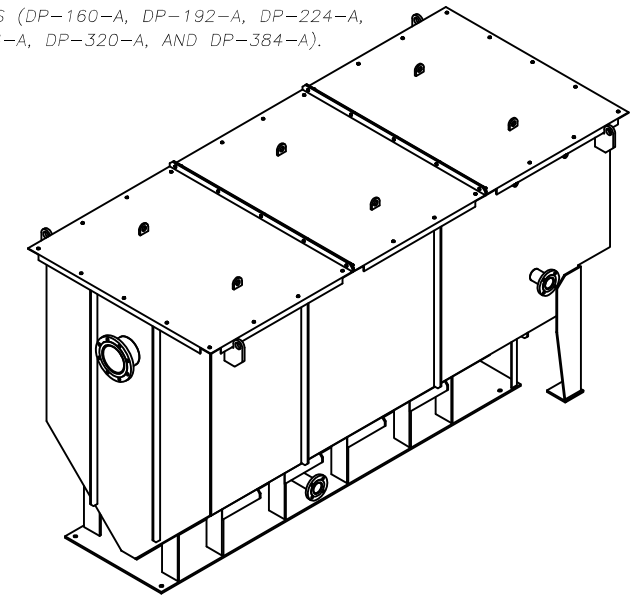
**STYLE 2**

OIL/WATER SEPARATOR WITH (2) SLUDGE HOPPERS  
TYPICALLY USED WITH NON-AUGER APPLICATIONS  
FOR MODELS (DP-160, DP-192, DP-224,  
DP-256, DP-320, AND DP-384).

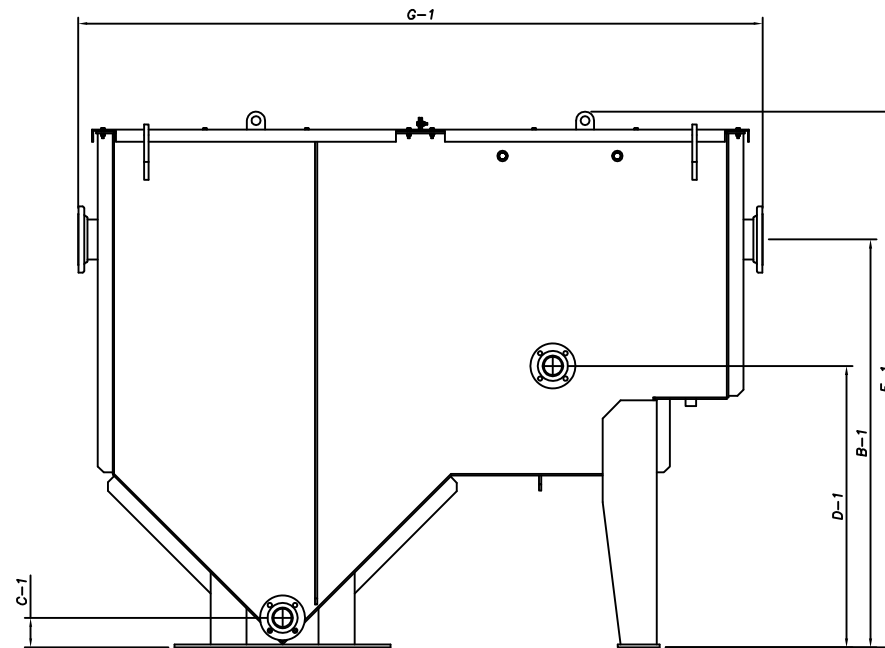
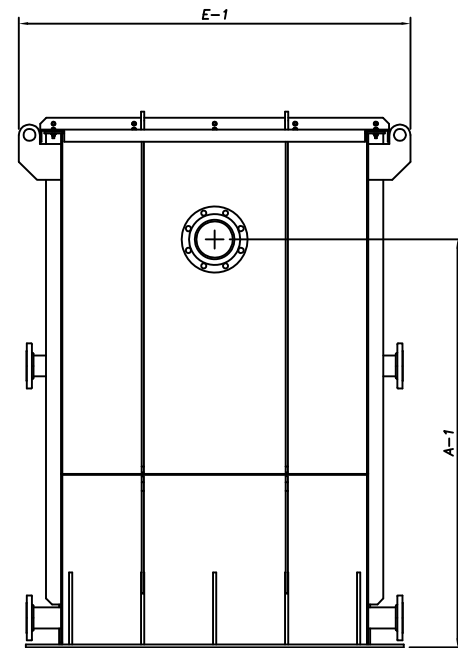


**STYLE 3**

OIL/WATER SEPARATOR WITH (1) SLUDGE HOPPER  
TYPICALLY USED WITH AN AUGER APPLICATION  
FOR MODELS (DP-160-A, DP-192-A, DP-224-A,  
DP-256-A, DP-320-A, AND DP-384-A).



**SEPARATOR ISOMETRICS**  
NO SCALE



**SEPARATOR ELEVATIONS**  
NO SCALE

	MODEL	A	A-1	B	B-1	C	C-1	D	D-1	E-1	F-1	G-1	TYPICAL FLOW RATE	OIL CAPACITY	SLUDGE CAPACITY	EFFLUENT CAPACITY	TOTAL CAPACITY	EMPTY WEIGHT	OPERATING WEIGHT
STYLE 1	DP-024	3"	3'-2"	3'	3'-2"	3'	0'-5"	2'	3'-5"	5'-6"	5'-0"	8'-6"	20 - 120	11 GAL.	107 GAL.	27 GAL.	550 GAL.	2,610 LBS.	7,200 LBS.
	DP-036	4"	4'-2"	4'	4'-2"	3'	0'-5"	3'	3'-5"	5'-6"	6'-0"	8'-6"	30 - 150	35 GAL.	107 GAL.	59 GAL.	780 GAL.	3,065 LBS.	9,575 LBS.
	DP-048	6"	4'-8"	6'	4'-8"	3'	0'-5"	3'	3'-11"	5'-6"	6'-5"	9'-6"	60 - 200	35 GAL.	173 GAL.	59 GAL.	945 GAL.	3,400 LBS.	11,280 LBS.
	DP-064	6"	5'-8"	6'	5'-8"	3'	0'-5"	3'	3'-11"	5'-6"	7'-5"	9'-6"	75 - 260	59 GAL.	173 GAL.	90 GAL.	1,212 GAL.	3,850 LBS.	13,965 LBS.
	DP-080	6"	5'-8"	6'	5'-8"	3'	0'-5"	3'	3'-11"	6'-6"	7'-5"	9'-6"	130 - 320	73 GAL.	214 GAL.	112 GAL.	1,500 GAL.	4,340 LBS.	16,860 LBS.
	DP-096	8"	5'-8"	8'	5'-8"	3'	0'-5"	3'	3'-11"	7'-6"	7'-5"	9'-6"	160 - 390	86 GAL.	255 GAL.	133 GAL.	1,785 GAL.	4,890 LBS.	19,790 LBS.
DP-128	8"	5'-8"	8'	5'-8"	3'	0'-5"	3'	3'-11"	9'-8"	7'-5"	9'-6"	175 - 510	117 GAL.	343 GAL.	180 GAL.	2,412 GAL.	6,100 LBS.	26,230 LBS.	
STYLE 2	DP-160	8"	5'-8"	8'	5'-8"	3'	0'-5"	3'	3'-11"	6'-6"	7'-5"	13'-9"	250 - 640	73 GAL.	411 GAL.	112 GAL.	2,366 GAL.	6,275 LBS.	26,020 LBS.
	DP-192	8"	5'-8"	8'	5'-8"	3'	0'-5"	3'	3'-11"	7'-6"	7'-5"	13'-9"	300 - 770	85 GAL.	490 GAL.	133 GAL.	2,820 GAL.	7,000 LBS.	30,530 LBS.
	DP-224	8"	5'-8"	8'	5'-8"	3'	0'-5"	3'	3'-11"	8'-8"	7'-5"	13'-9"	350 - 900	103 GAL.	583 GAL.	159 GAL.	3,356 GAL.	7,800 LBS.	35,800 LBS.
	DP-256	8"	5'-8"	8'	5'-8"	3'	0'-5"	3'	3'-11"	9'-8"	7'-5"	13'-9"	420 - 1,000	117 GAL.	662 GAL.	180 GAL.	3,808 GAL.	8,657 LBS.	40,430 LBS.
	DP-320	10"	5'-8"	10'	5'-8"	3'	0'-5"	3'	3'-11"	11'-8"	7'-5"	13'-9"	500 - 1,300	145 GAL.	819 GAL.	223 GAL.	4,713 GAL.	10,130 LBS.	49,460 LBS.
	DP-384	10"	7'-8"	10'	7'-8"	3'	0'-5"	3'	4'-11"	9'-8"	9'-6"	13'-9"	610 - 1,500	166 GAL.	662 GAL.	309 GAL.	5,452 GAL.	10,185 LBS.	55,684 LBS.
STYLE 3	DP-160-A	8"	5'-9"	8'	5'-9"	3'	0'-5"	3'	4'-0"	6'-6"	7'-6"	13'-9"	250 - 640	73 GAL.	453 GAL.	112 GAL.	2,408 GAL.	6,255 LBS.	26,350 LBS.
	DP-192-A	8"	6'-3"	8'	6'-3"	3'	0'-5"	3'	4'-6"	7'-6"	8'-0"	13'-9"	300 - 770	85 GAL.	644 GAL.	133 GAL.	2,973 GAL.	6,891 LBS.	31,702 LBS.
	DP-224-A	8"	6'-10"	8'	6'-10"	3'	0'-5"	3'	5'-1"	8'-8"	8'-7"	13'-9"	350 - 900	103 GAL.	914 GAL.	159 GAL.	3,687 GAL.	7,675 LBS.	38,444 LBS.
	DP-256-A	8"	7'-4"	8'	7'-4"	3'	0'-5"	3'	5'-7"	9'-8"	9'-1"	13'-9"	420 - 1,000	117 GAL.	1,178 GAL.	180 GAL.	4,325 GAL.	8,523 LBS.	44,616 LBS.
	DP-320-A	10"	8'-4"	10'	8'-4"	3'	0'-5"	3'	6'-7"	11'-8"	10'-1"	13'-9"	500 - 1,300	145 GAL.	1,806 GAL.	223 GAL.	5,700 GAL.	10,155 LBS.	57,723 LBS.
	DP-384-A	10"	9'-4"	10'	9'-4"	3'	0'-5"	3'	6'-7"	9'-8"	11'-2"	13'-9"	610 - 1,500	166 GAL.	1,178 GAL.	309 GAL.	5,969 GAL.	9,957 LBS.	59,770 LBS.

**HYDRO-FLO TECHNOLOGIES INC.**  
3985 Commerce Drive, St. Charles, IL 60174  
www.hydroflothec.com

THIS DRAWING IS THE PROPERTY OF HYDRO-FLO TECHNOLOGIES, INC. AND IT IS LOANED UPON THE EXPRESS CONDITION THAT IT SHALL NOT BE COPIED OR REPRODUCED IN ANY MANNER THAT IT SHALL NOT BE SUBMITTED TO OTHERS FOR EXAMINATION WITHOUT THE CONSENT OF THIS COMPANY. THAT IT SHALL NOT BE USED IN ANY OTHER WAY DETRIMENTAL TO THE INTERESTS OF THIS COMPANY AND THAT IT SHALL BE RETURNED UPON DEMAND.

DP OIL/WATER SEPARATOR  
TABULATED DRAWING  
CAD FILE: E:/2002 JOBS/ACAD STANDARDS/DYNA-PACK/TABULATED.DWG

TOLERANCES UNLESS NOTED: ±.5/16" ALL DIMENSIONS IN INCHES	ANSI <b>D</b>	SCALE: AS SHOWN	DRAWN: AJS	DATE: 10/29/02
JOB	CUSTOMER	APPRVD:	DRAWING NUMBER	SHT NO:
N/A	PROP.		TABULATED	1 OF 1

REV	DATE	CHANGES